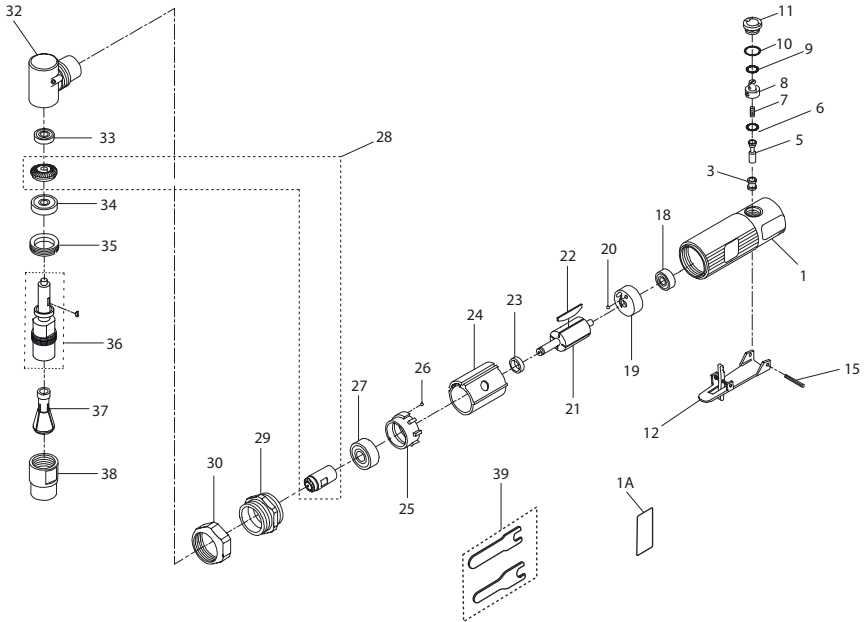


301 and 301-EU Air Die Grinder Exploded Diagram



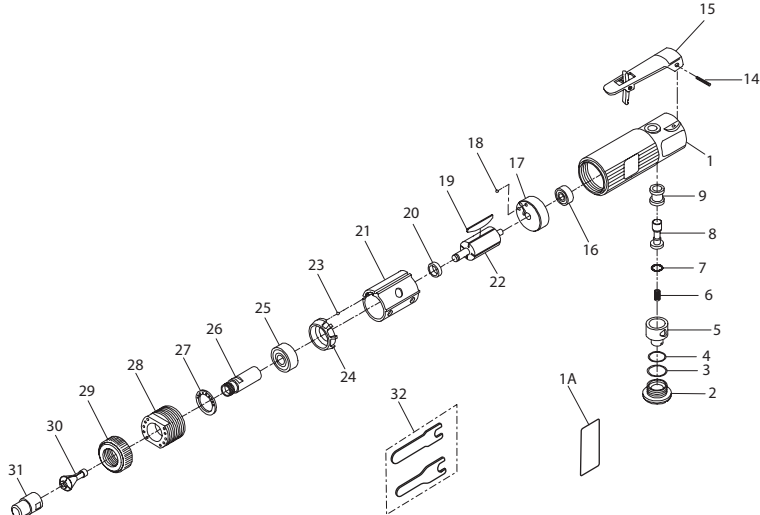
(Dwg. TPB1003-3)

301 and 301-EU Air Die Grinder Parts List

| Item | Part Description | Part Number | Item | Part Description | Part Number |
|------|------------------------|-------------|------|---------------------|----------------|
| | Motor Housing Assembly | | 21 | Rotor | 301-53 |
| | for 301 | 301-A40 | 22 | Vane (set of 4) | 301-42-4 |
| | for 301-EU | 301-EU-A40 | 23 | Spacer | 301-448 |
| 1 | Motor Housing | 301-40 | 24 | Cylinder | 301-3 |
| 1A | Nameplate | | 25 | Front Endplate | 301-11 |
| | for 301 | 301-301 | 26 | Ball | 301-98 |
| | for 301-EU | 301-EU-301 | 27 | Front Rotor Bearing | 301-24 |
| 3 | Throttle Valve Bushing | 301-503 | 28 | Gear Pinion Set | 3102-A552-1.25 |
| 5 | Throttle Valve | 301-302 | 29 | Clamp Nut | 301-306 |
| 6 | Throttle Valve O-Ring | 301-159 | 30 | Nut | 301-27 |
| 7 | Spring | 301-51 | 32 | Angle Housing | 301-A550 |
| 8 | Regulator | 301-249 | 33 | Bearing | 301-22 |
| 9 | Throttle Valve O-Ring | 301-251 | 34 | Collet Bearing | 301-24 |
| 10 | Valve Cap O-Ring | 301-206 | 35 | Cap | 301-531 |
| 11 | Valve Cap | 301-266 | 36 | Arbor Kit | 301-K591A |
| 12 | Lever Assembly | 301-A400 | 37 | Collet | |
| 15 | Lever Pin | 301-120 | | for 301 (1/4") | 301-700 |
| 18 | Rear Rotor Bearing | 301-22 | * | for 301-EU (6 mm) | 301-700B |
| 19 | Rear End Plate | 301-12 | 38 | Collet Nut | 301-699 |
| 20 | Ball | 301-98 | 39 | Wrench Kit | 301-69 |

* Note: All EU models are supplied with 6 mm Collet, assembled with the tool. However another 1/4" collet, part number 301-700 is given as an accessory packed separately in the box.

307A and 307A-EU Air Die Grinder Exploded Diagram



(Dwg. TPB1002-3)

307A and 307A-EU Air Die Grinder Parts List

| Item | Part Description | Part Number | Item | Part Description | Part Number |
|------|------------------------|-------------|------|---------------------|-------------|
| | Motor Housing Assembly | | 17 | Rear End Plate | 301-12 |
| | for 307A | 307A-40 | 18 | Ball | 301-98 |
| | for 307A-EU | 307A-EU-40 | 19 | Vanes (set of 4) | 301-42-4 |
| 1 | Motor Housing | 301-40 | 20 | Spacer | 301-448 |
| 1A | Nameplate | | 21 | Cylinder | 301-3 |
| | for 307A | 307A-301 | 22 | Rotor | 301-53 |
| | for 307A-EU | 307A-EU-301 | 23 | Ball | 301-98 |
| 2 | Valve Cap | 301-266 | 24 | Front End Plate | 307A-11 |
| 3 | Valve Screw O-Ring | 301-206 | 25 | Front Rotor Bearing | 301-24 |
| 4 | Regulator O-Ring | 301-251 | 26 | Collet Body | 307A-214 |
| 5 | Air Regulator | 301-249 | 27 | Muffler | 307A-311 |
| 6 | Valve Spring | 301-51 | 28 | Lock Nut | 307A-27 |
| 7 | O-Ring | 301-159 | 29 | Housing Cap | 307A-699 |
| 8 | Throttle Valve | 301-302 | 30 | Collet | |
| 9 | Throttle Valve Bushing | 301-503 | | for 307A (1/4") | 301-700 |
| 14 | Lever Pin | 301-120 | * | for 307-EU (6 mm) | 301-700B |
| 15 | Lever Assembly | 301A-400 | 31 | Collet Nut | 301-699 |
| 16 | Rear Rotor Bearing | 301-22 | 32 | Wrench Kit | 301-69 |

* Note: All EU models are supplied with 6 mm Collet, assembled with the tool. However another 1/4" collet, part number 301-700 is given as an accessory packed separately in the box.

Parts and Maintenance

When the life of the tool has expired, it is recommended that the tool be disassembled, degreased and parts be separated by material so that they can be recycled.

Tool repair and maintenance should only be carried out by an authorized Service Center.

Refer all communications to the nearest **Ingersoll Rand** Office or Distributor.

Related Documentation

For additional information refer to:

Air Die Grinder Product Safety Information Manual 04580288.

Air Die Grinder Product Information Manual 16573487.

Manuals can be downloaded from www.irtools.com.



www.irtools.com
© 2008 **Ingersoll Rand** Company

16573495
Edition 6
June 2008